



Perth High School



<p>Study Approaches</p> <ul style="list-style-type: none"> • Pupils are required to complete all research out with timetable class time to support them progress with practical tasks. • Pupils should research at length what influences inspire their chosen artists and designers. • Pupils are required to take development studies home to complete if deadlines are in danger of not being adhered to. • Pupils should regularly use cue cards to support them revise the relevant terminology which needs to be applied to art issues and design contexts • Pupils need to use past papers to support them analyse art and design works by critically responding to unseen prompts and images • Pupils need to analyse their answers and identify where justification has been applied / not applied • Pupils needs to develop evaluative language and apply this to their own and artist / designers work(s) 	<p>Tips for Success</p> <ul style="list-style-type: none"> • Pupils achieve success at National 5 level when; <ul style="list-style-type: none"> ➤ They choose personal themes and disciplines which have significant meaning to them ➤ They fully meet all the requirements of their design brief ➤ They plan in advance their individualised next steps in preparation for their learning conversation ➤ They refine their ideas, making subtle, gradual adjustments at the development stage ➤ They ensure there is clear continuity between each sheet ➤ They fully challenge themselves with; <ul style="list-style-type: none"> EXPRESSIVE - scale and viewpoint and experiment with a wide range of materials DESIGN – balance and materials and experiment widely with a small range of materials specific to their brief ➤ They ensure each deadline is met ➤ They study their art terminology worksheets weekly ➤ They justify every judgement made in their analysis of art and design works 	<p>NATIONAL 5 Art & Design</p> <p>Course Contents and Components</p> <ul style="list-style-type: none"> • This course is externally marked and has 3 components; 1. Expressive Portfolio total -100 marks <ul style="list-style-type: none"> SECTION 1 – PROCESS – 40 marks <ul style="list-style-type: none"> ➤ Relevant , focused analytical drawings ➤ Single line of focused development leading to final outcome SECTION 2 – SKILLS – 50 marks <ul style="list-style-type: none"> ➤ Using a range of materials ➤ Using a range of visual elements SECTION 3 – EVALUATION – 10 MARKS <ul style="list-style-type: none"> ➤ Justified, critical evaluation of their work 2. Design Portfolio total – 100 marks <ul style="list-style-type: none"> SECTION 1 – PROCESS – 40 marks <ul style="list-style-type: none"> ➤ Relevant 2D/3D investigative material ➤ Single line of focused development leading to final outcome SECTION 2 – SKILLS – 50 marks <ul style="list-style-type: none"> ➤ Using a range of materials ➤ Understanding of design elements SECTION 3 – EVALUATION – 10 marks <ul style="list-style-type: none"> ➤ Justified, critical evaluation of their work 3. Question Paper total – 50 marks 1 hour 30 minutes written exam

Exam Length

- The written exam is 1 hour & 30 minutes in length. Pupils answer 6 questions.

- SECTION 1 Expressive**

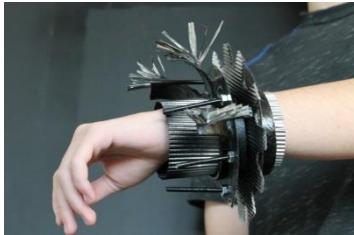
Analysis of artworks studied in class
Influences of 1 artist
1 question from unseen image

- SECTION 2 DESIGN**

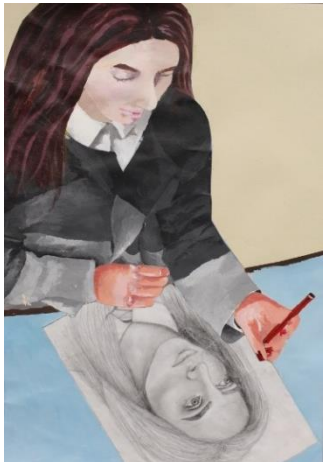
Analysis of a design works studied in class
Influences of 1 designer
1 question from unseen image

Examples of recent work from SQA 2018 diet below;

NATIONAL 5 DESIGN



NATIONAL 5 EXPRESSIVE



Key Dates

**These are week ending dates, each class's final dates for completion will be the last period they have Art that week. Some classes are completing 1 folio before October break. Please confirm this with your teacher.*

Expressive portfolio - 1 x A1 sheet and 1 x A2 sheet + A4 evaluation

Design portfolio - 1 x A1 sheet and 1 x A2 sheet + A4 Evaluation

31.08.18	N5 Investigation completed <ul style="list-style-type: none"> Expressive – 3 drawings & summary of intent. Design – Design brief, thematic images, market research images, sources of relevant materials, 3D forms
23.11.18	N5 Development completed <ul style="list-style-type: none"> Expressive – 6 compositions from single line of enquiry which focus on; <ol style="list-style-type: none"> Different viewpoints Different media Different techniques Minimum of 3 visual elements Design – 6 different refinements of single line of enquiry which focus on; <ol style="list-style-type: none"> Different techniques Ergonomics & Function Target market Visual impact Paper mocks
20.12.18	N5 Evaluation 1 st Drafts completed
01.03.19	N5 Final Outcomes completed <ul style="list-style-type: none"> Expressive – A2 outcome Design – Photoshoot of outcome
29.03.19	N5 Expressive & Design Portfolio's completed with Labels, Annotations & Final Draft Evaluations attached

Support from the Department

- Supported Study**
 The department offers supported study for N5 pupils to help them receive 1:1 tuition or reinforcement with any of the 3 elements of the course. These sessions are offered every lunchtime and after school on a Tuesday and Wednesday from 3.45 until 5pm.
- Frameworks**
 Frameworks are provided to support pupils evaluate their own and artist / designers work
- Learner Conversations**
 1:1 learner conversations are held regularly in class to support pupils allocate their next steps and discuss their chosen direction and current working grade
- Deadlines**
 Folio deadlines are made available at the beginning of the session and reinforced regularly throughout each term. See key dates.
- Homework**
 Homework takes the form of;
 Investigating / researching artists / designers
 Drawing / painting development ideas
- Assessment**
 Pupils sit past papers regularly throughout the year with a full written prelim exam in January.

